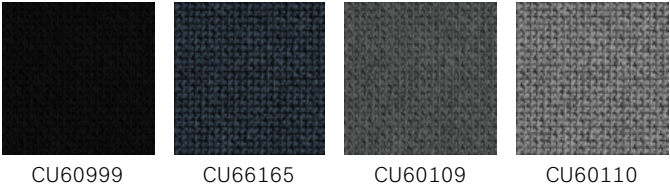


HÅG Standard fabrics & colour collection 2024

CURA (GABRIEL) - PRICE GROUP 1

Cura is a two-coloured fabric made from 98% post-consumer recycled polyester. It has a matt, slightly irregular and natural-looking texture where the dark, underlying grey fibers create a discreet yet vibrant melange effect. High durability and stretchability and its soft, voluminous touch make Cura suitable for both office and lounge furniture.

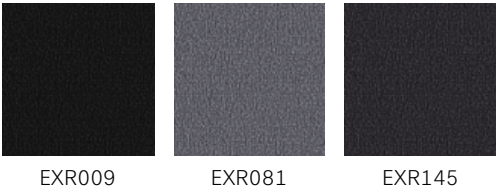
- Composition:** 98% post-consumer recycled polyester, 2% polyester
- Weight:** 420 g/lm
- Abrasion resistance:** 100 000 Martindale (EN ISO 12947-2)
- Flammability:** BS EN 1021: 1-2, BS 5852 0&1, CA TB 117-2013, ASTM E 84 Class I
- Light fastness:** 5-8 (EN ISO 105 - B02)
- Rubbing fastness:** 4-5/4-5 (Wet/Dry) (EN ISO 105X12)
- Pilling:** 4-5 (EN ISO 12945-2)
- Environmental facts:** EU Ecolabel, Oeko-Tex® Standard 100, Contains no Flame Retardant chemicals, ISO 14001 certified company
- Design:** Cenk Kivrikoglu
- Produced in:** Lithuania
- Cleaning:** Wash or dry cleaning, Can be disinfected with ethanol and is bleach-cleanable (For further info follow Gabriel´s cleaning guidelines – www.gabriel.dk)



XTREME (CAMIRA) - PRICE GROUP 1

Xtreme is a crepe fabric made from 100% post-consumer recycled polyester that features exceptional Euro flammability performance. Extra stretch and structure gives an irregular, shiny finish.

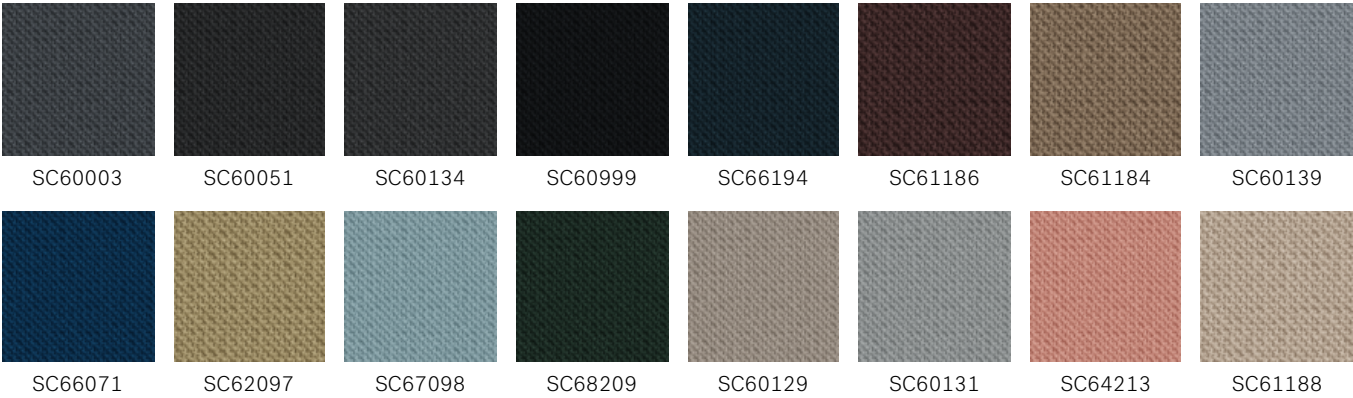
- Composition:** 100% post-consumer recycled polyester
- Weight:** 310 g/m2
- Abrasion resistance:** >100 000 Martindale (EN ISO 12947-2)
- Flammability:** BS EN 1021: 1-2 (Cigarette & match), BS 7176 Low & Medium Hazard, BS 5852 Section 4 Crib 5, DIN 4102 B1, UNI 9175 Class 1 IM, NF D 60-013
- Light fastness:** 6 (EN ISO 105 - B02: 2013)
- Rubbing fastness:** 4/4 (Wet/Dry) (EN ISO 105X12)
- Pilling:** 5 (EN ISO 12945-2)
- Environmental facts:** EU Ecolabel, Oeko-Tex® Standard 100, Indoor Advantage™ "Gold", non metallic dyestuffs, ISO 14001 certified company.
- Design:** Camira Design Studio
- Produced in:** United Kingdom
- Cleaning & disinfection:** Washable to 60 °C and bleach cleanable (For further info follow Camira's cleaning guidelines – www.camirafabrics.com)



SELECT (GABRIEL) - PRICE GROUP 2

Select is a classic woolen fabric with a tightly woven relief structure, combining excellent softness, stretch and durability. Its rich texture with the interplay of light and shadow add depth in all the colours in the palette.

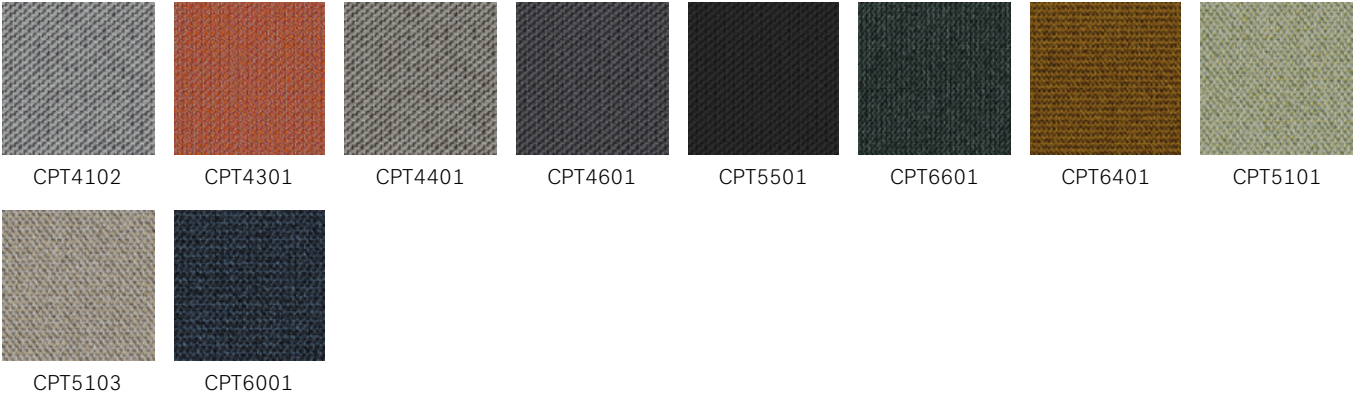
- Composition:** 85% New Zealand wool, 15% polyamide
- Abrasion resistance:** 200 000 Martindale (EN ISO 12947-2)
- Flammability:** BS EN 1021: 1-2, BS 5852 0&1, BS5852 Crib 5, CA TB 117-2013, IMO MSC 307(88) Annex 1 part 8/MED registration IMO
- Light fastness:** 5-8 (EN ISO 105 - B02)
- Rubbing fastness:** 4-5/4-5 (Wet/Dry) (EN ISO 105X12)
- Pilling:** 4 (EN ISO 12945-2)
- Environmental facts:** EU Ecolabel, Oeko-Tex® Standard 100, 100% free of heavy metals, ISO 14001 certified company
- Design:** Cenk Kivrikoglu
- Produced in:** Lithuania
- Cleaning:** Professional dry cleaning (For further info follow Gabriel's cleaning guidelines – www.gabriel.dk)



CAPTURE (GABRIEL) - PRICE GROUP 3

Capture is a lightly felted and multi-coloured wool fabric combining softness, stretch and strenght. It fuses light and dark colours to a refined melange pattern in subtle nuances, which add richness and depth to the design.

- Composition:** 85% New Zealand wool, 15% polyamide
- Abrasion resistance:** 200.000 Martindale (EN ISO 12947-2)
- Flammability:** BS EN 1021: 1-2 (Cigarette & match), BS 5852 Part 1 0,1 (Cigarette & match), CA TB 117-2013, Class Uno UNI 9175 Class 1 IM
- Light fastness:** 5-7 (EN ISO 105-B02)
- Rubbing fastness:** 4-5/4-5 (Wet/Dry) (EN ISO 105X12)
- Pilling:** 4-5 (EN-ISO 12945-2)
- Environmental facts:** EU Ecolabel, Oeko-Tex® Standard 100, 100% free of heavy metals, ISO 14001 certified company
- Design:** Cenk Kivrikoglu
- Produced in:** Lithuania
- Cleaning:** Professional dry cleaning (For further info follow Gabriel's cleaning guidelines – www.gabriel.dk)



FOCUS (GABRIEL) - PRICE GROUP 3

Focus is a woven felt fabric made of 100% long-staple worsted wool. It has an ultra soft and satiny touch combined with high strength obtained by use of high-quality worsted wool yarn and careful production processes. In addition to high durability, the fabric does not pill and will remain attractive over time regardless of wear and tear.

Composition: 100% New Zealand wool

Weight: 660 g/lm

Abrasion resistance: 100 000 Martindale (EN ISO 12947-2)

Flammability: BS EN 1021: 1-2 (Cigarette & match), BS 5852 Part 1 0.1 Cigarette and match, CA TB 117-2013, Class Uno UNI 9175 Class 1 I EMME, ÖNORM A33800-B1-B33825-Q1UK, AM 18 - NF D 60-013-(only for fabric)

Light fastness: 5-7 (EN ISO 105-B02)

Rubbing fastness: 4-5/4-5 (Wet/Dry) (EN ISO 105X12)

Pilling: 4 (EN ISO 12945-2)

Environmental facts: EU Ecolabel, Free of heavy metals and harmful chemicals, biodegradable, Oeko-Tex® Standard 100, ISO 14001 certified company

Design: Inger Mosholt Nielsen, colours Cenk Kivrikoglu

Produced in: Lithuania

Cleaning: Professional dry cleaning (For further info follow Gabriel´s cleaning guidelines – www.gabriel.dk)



FC60999



FC61042



FC61039



FC61036

FOCUS MELANGE (GABRIEL) - PRICE GROUP 3

Focus Melange is a woven felt fabric made of 100% long-staple worsted wool. It has an ultra soft and satiny touch combined with high strength obtained by use of high-quality worsted wool yarn and careful production processes. In addition to high durability, the fabric does not pill and will remain attractive over time regardless of wear and tear. The equal thickness between the warp and weft yarn give a harmonious and symmetric melange colour expression.

Composition: 100% New Zealand wool

Weight: 660 g/lm

Abrasion resistance: 100 000 Martindale (EN ISO 12947-2)

Flammability: BS EN 1021: 1-2 (Cigarette & match), BS 5852 Part 1 0.1 Cigarette and match, CA TB 117-2013, Class Uno UNI 9175 Class 1 I EMME, ÖNORM A33800-B1-B33825-Q1UK

Light fastness: 5-7 (EN ISO 105-B02)

Rubbing fastness: 4-5/4-5 (Wet/Dry) (EN ISO 105X12)

Pilling: 4 (EN ISO 12945-2)

Environmental facts: EU Ecolabel, Free of heavy metals and harmful chemicals, biodegradable, Oeko-Tex® Standard 100, ISO 14001 certified company

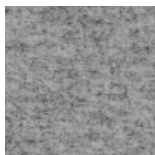
Design: Inger Mosholt Nielsen, colours Cenk Kivrikoglu

Produced in: Lithuania

Cleaning: Professional dry cleaning (For further info follow Gabriel´s cleaning guidelines – www.gabriel.dk)



FCM60308



FCM60310



FCM60900



FCM61240

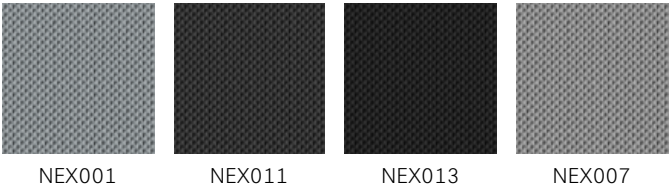


FCM68247

NEXUS (CAMIRA) - PRICE GROUP 3

Nexus is a polyester knit, offering a two dimensional stretch in a pinprick dot matrix design effect.

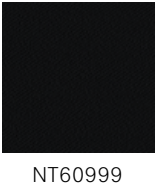
- Composition:** 100% polyester
- Abrasion resistance:** > 100.000 Martindale (EN ISO 12947-2)
- Flammability:** BS EN 1021: 1-2 (Cigarette & match), BS 7176 Low Hazard, UNI 9175 Class 1 IM
- Light fastness:** 5 (EN ISO 105 - B02)
- Rubbing fastness:** 4/4 (Wet/Dry) (EN ISO 105X12)
- Pilling:** 4/5 (EN ISO 12945-2)
- Environmental facts:** Oeko-Tex® Standard 100, Indoor Advantage™ "Gold", 100% free of heavy metals, ISO 14001 certified company
- Design:** Camira Design Studio
- Produced in:** Spain
- Cleaning & disinfection:** Washable to 60 °C and bleach cleanable. (For further info follow Camira's cleaning guidelines – www.camirafabrics.com)



NOTE (GABRIEL) - PRICE GROUP 3

Note is a soft and lustrous worsted wool with a classic satin structure. It´s sleek design highlights the furniture´s shape and sharpens its silhouette.

- Composition:** 85% New Zealand wool, 15% polyamide
- Abrasion resistance:** 200 000 Martindale (EN ISO 12947-2)
- Flammability:** BS EN 1021: 1-2 (Cigarette & match), BS 5852 0&1, BS 5852 crib 5, IMO MSC 307 (88) Annex 1 part 8, CA TB 117-2013
- Light fastness:** 5-8 (EN ISO 105 - B02)
- Rubbing fastness:** 4/4-5 (Wet/Dry) (EN ISO 105X12)
- Pilling:** 4 (EN ISO 12945-2)
- Environmental facts:** EU Ecolabel, Oeko-Tex® Standard 100, 100% free of heavy metals, ISO 14001 certified company
- Design:** Inger Mosholt Nielsen
- Produced in:** Lithuania
- Cleaning:** Professional dry cleaning (For further info follow Gabriel's cleaning guidelines – www.gabriel.dk)



OCEANIC (CAMIRA) - PRICE GROUP 3

Oceanic is made from 100 % post-consumer recycled polyester yarn where 90% are created from post-consumer plastic bottles diverted from landfill and 10% is upcycled marine plastic(from marine litter). It is a fabric born out of the SEAQUAL Initiative designed to combat marine plastic pollution and achieve a waste free environment. Oceanic has a two coloured diagonal structure with a matte surface and soft touch.

Composition: 100 % post-consumer recycled polyester, including 50% SEAQUAL yarn

Weight: 497 g/m2 ±5%

Abrasion resistance: >100 000 Martindale (EN ISO 12947-2)

Flammability: BS EN 1021: 1-2 (Cigarette & match), BS 7176 Low, BS 7176 Medium Hazard with EnviroFlam5, CA TB 117-2013

Light fastness: 5 (EN ISO 105 - B02: 2013)

Rubbing fastness: 4/4 (Wet/Dry) (EN ISO 105X12)

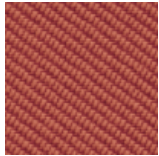
Pilling: 4 (EN ISO 12945-2)

Environmental facts: EU Ecolabel, Oeko-Tex® Standard 100, Indoor Advantage™ "Gold", non metallic dyestuffs, ISO 14001 certified company.

Design: Camira Design Studio

Produced in: United Kingdom

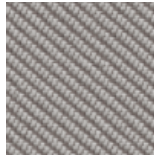
Cleaning & disinfection: Washable at 60 °C and bleach cleanable (For further info follow Camira´s cleaning guidelines – www.camirafabrics.com)



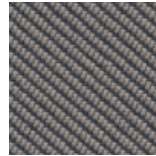
OCI012



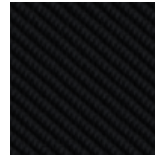
OCI011



OCI014



OCI008



OCI001

PUXX 1 (ONIRO) - PRICE GROUP 3

PUxx 1 is a polyurethane leather with a soft touch that is easy to clean and disinfect. It is 100% waterproof, antibacterial & antifungal and resistant towards blood and urine. Being strong, durable and easy to maintain make it well suited for environments with high cleaning requirements.

Composition: Coating: 100% polyurethane with a cotton/polyester backing

Weight: 520 g/m2

Abrasion resistance: 300 000 Martindale (EN 530-2 (2010))

Flammability: BS EN 1021: 1-2 (Cigarette & match), CA TB 117-2013, BS 5852:2006 Crib 5, IMO 2010 FTP Code Annex 1 part 8

Light fastness: 6-7 (EN ISO 105-B02)

Rubbing fastness: 4-5/4-5 (Wet/Dry) (EN ISO 105X12.2016)

Environmental facts: Oeko-Tex® Standard 100, 100% free of heavy metals and harmful chemicals, ISO 14001 certified company

Design: Oniro Design team

Produced in: Belgium

Cleaning: Alcohol, hydrogen peroxide & chlorine solutions. Never use solvents. For more info please contact supplier www.oniro.nl

PUxx 1 is not available for HÅG Conventio models 9510/9511/9512.



PU215816

ILLUSION (NEVOTEX) - PRICE GROUP 4

Illusion is a resistant easy cleanable synthetic leather with a polyurethane (PU) coating on a cotton backing. It has a semi matte surface with a softly grained structure and is recommended to use in environments with high cleaning demands.

Composition: Coating: 100% Polyurethane, Backing: 100% Cotton

Weight: 595 ± 30 g/m²

Abrasion resistance: 500 000 Martindale (EN ISO 5470-2:2003)

Flammability: BS EN 1021: 1-2 (Cigarette & match), CA TB 117-2013, BS 5852:2006 Crib 5, DiN 4102-1B2:1998 (B2), IMO 2010 FTP Code Annex 1 part 8

Light fastness: >7 (EN ISO 105-B02)

Rubbing fastness: 4-5/4-5 (Wet/Dry) (EN ISO 105X12.2016)

Surface resistance: 4-5 (EN12720)

Environmental facts: Oeko-Tex® Standard 100, Free of heavy metals and harmful chemicals, ISO 14001 certified company

Design: Nevotex Design team

Produced in: Belgium

Cleaning: Alcohol (75%), hydrogen peroxide & chlorine. For specific recommendations please contact supplier www.nevotex.com



ILU110

SIRDAL (GU) - PRICE GROUP 4

Sirdal is part of the 100% Norwegian wool trio Sirdal, Suldal and Setesdal. These fabrics are uniquely short-travelled in every part of the process – 100% pure Norwegian wool manufactured in Norway. Norwegian wool with its distinctive brilliance, resilience and durability is expressed through rich structures that evoke authenticity paired with chic and modern comfort.

Composition: 100% Virgin Norwegian wool

Weight: 800 g/m

Abrasion resistance: 56 000 Martindale (EN ISO 12947-2)

Flammability: BS EN 1021: 1-2 (Cigarette & match), IMO FTP code 2010: Part 8

Light fastness: 5-7 (EN ISO 105-B02)

Rubbing fastness: 4/4-5 (Wet/Dry) (EN ISO 105X12)

Pilling: 3-4 (EN ISO 12945-2)

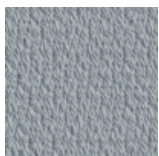
Environmental facts: Locally produced, 100% free of heavy metals, ISO 14001 certified company

Design: GU design team/Ragnhild Nordhagen, Flokk Design team/Pernille Stoltze

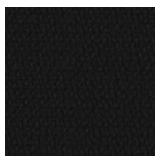
Produced in: Norway

Cleaning: Professional dry cleaning (For further info follow GU's cleaning guidelines – www.gu.no)

Sirdal is not available for HÅG Capisco Puls models 8001/8010.



SRD120



SRD190



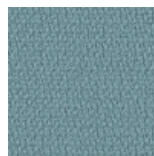
SRD320



SRD480



SRD630



SRD730



SRD780



SRD960

SULDAL (GU) - PRICE GROUP 4

Suldal is a melange fabric, part of the 100% Norwegian wool trio Sirdal, Suldal and Setesdal. These fabrics are uniquely short-travelled in every part of the process – 100% pure Norwegian wool manufactured in Norway. Norwegian wool with its distinctive brilliance, resilience and durability is expressed through rich structures that evoke authenticity paired with chic and modern comfort.

Composition: 100% Virgin Norwegian wool

Weight: 800 g/m

Abrasion resistance: > 56 000 Martindale (EN ISO 12947-2)

Flammability: BS EN 1021: 1-2 (Cigarette & match), IMO FTP code 2010: Part 8

Light fastness: 5-7 (EN ISO 105-B02)

Rubbing fastness: 4/4-5 (Wet/Dry) (EN ISO 105X12)

Pilling: 3-4 (EN ISO 12945-2)

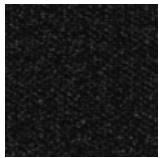
Environmental facts: EU Ecolabel, Locally produced, Biodegradable, 100% free of heavy metals, ISO 14001 certified company

Design: GU Design Team/Ragnhild Nordhagen, Flokk Design Team/Pernille Stoltze

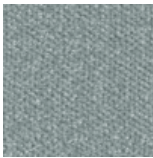
Produced in: Norway

Cleaning: Professional dry cleaning (For further info follow GU´s cleaning guidelines – www.gu.no)

Suldal is not available for HÅG Capisco Puls models 8001/8010,



SUL180



SUL810

STEELCUT TRIO 3 (KVADRAT) - PRICE GROUP 4

Steelcut Trio 3 is a strong worsted wool and polyamide woven fabric, made with three different coloured yarns. The colours and the special weave create a three-dimensional surface where the colours seem to change depending on the angle of perspective. Like Steelcut 3, despite the complexity of the textile's innovative weave, it has a simple, precise expression.

Composition: 90% worsted new wool, 10% polyamide

Weight: 770 g/lm

Abrasion resistance: 100 000 Martindale (EN ISO 12947-2)

Flammability: BS EN 1021: 1-2 (Cigarette & match, CA TB 117-2013, , BS 5852 Crib 5 (with treatment), BS 5852 part 1, BS 5852 ignition source 3, IMO FTP Code 2010 Part 8, NF D 60 013, NFPA 260, UNI 9175 1IM, ÖNORM B1/Q1, AS/NZS 3837 Class 2, GB 50222 B1 with treatment (Chinese)

Light fastness: 6-7 (EN ISO 105-B02)

Rubbing fastness: 3-5/4-5 (Wet/Dry) (EN ISO 105X12)

Pilling: 4 (EN ISO 12945-2)

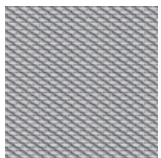
Environmental facts: EU Ecolabel, 100% free of heavy metals, ISO 14001 certified company, GREENGUARD Gold

Design: Frans Dijkmeijer, Giulio Ridolfo (updated colourways)

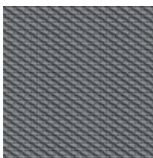
Produced in: United Kingdom

Cleaning: Professional dry cleaning with tetrachloroethylene, normal process (For further info follow Kvadrat´s cleaning guidelines – www.kvadrat.dk)

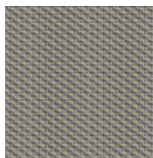
Steelcut Trio 3 is not available for HÅG Capisco Puls models 8001/8010.



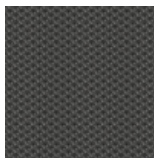
STT133



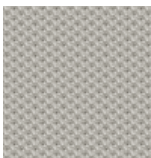
STT153



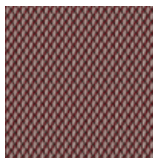
STT253



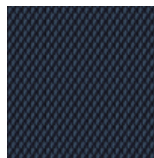
STT383



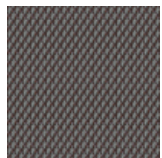
STT213



STT645



STT796



STT276

STEELCUT 3 (KVADRAT) - PRICE GROUP 4

Steelcut 3 is a unicoloured strong worsted wool and polyamide woven fabric, combining durability, soft touch and colour depth. The construction creates a three-dimensional surface resembling small pyramids or steel points. Despite its complex weaving technique, it has a simple and precise expression.

Composition: 90% worsted new wool, 10% polyamide

Weight: 825 g/lm

Abrasion resistance: 100 000 Martindale (EN ISO 12947-2)

Flammability: BS EN 1021: 1-2 (Cigarette & match, CA TB 117-2013, BS 5852 Crib 5 (with treatment), BS 5852 part 1, IMO FTP Code 2010 Part 8, NF D 60 013, NFPA 260, UNI 9175 1IM, ÖNORM B1/Q1, AS/NZS 3837 Class 2, ASTM E84 Class A Unadhered, ASTM 84 Class B Adhered

Light fastness: 5 6 (EN ISO 105-B02)

Rubbing fastness: 3-5/4-5 (Wet/Dry) (EN ISO 105X12)

Pilling: 3-4 (EN ISO 12945-2)

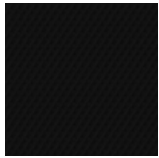
Environmental facts: EU Ecolabel, 100% free of heavy metals, ISO 14001 certified company, GREENGUARD Gold

Design: Frans Dijkmeijer, Giulio Ridolfo (updated colourways)

Produced in: United Kingdom

Cleaning: Professional dry cleaning with tetrachloroethylene, normal process (For further info follow Kvadrat's cleaning guidelines – www.kvadrat.dk)

Steelcut 3 is not available for HÅG Capisco Puls models 8001/8010.



STT190



STT655

PALOMA SOFT (WOLLSDORF) - PRICE GROUP 6

High quality semi-aniline leather. All our standard colours from Paloma have a special finish adding a particular softness to the leather. Excellent friction and breathing properties. The surface may feature small scars and marks resulting from insect bites etc. These are proof of the natural origin of the product and are part of its character.

Flammability: BS EN 1021: 1-2 (Cigarette & match), BS 5852 Crib 5, IMO A.652 (16)

Light fastness: 6 (EN ISO 105-B02)

Rubbing: Wet 80/4 -Dry 2000/4 - Sweat 50/4 - ISO 11640

Finish-adhesion: 2,0 N/cm ISO 11644

Tear-strength: 20 N/mm DIN 53329- A

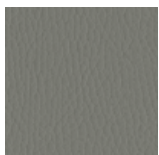
Environmental facts: Tanned without using chromium salts, BlueAngel, ECO2L-certificate, ISO 14001 certified company

Produced in: Austria

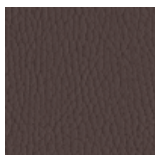
Animal Welfare: All hides are by-products from the meat and dairy industries, only use hides from healthy and uninjured animal. Following European standards as a minimum and the "Five Freedoms" of livestock as defined by FAWC (Farm Animal Welfare Council)

Cleaning: Follow the leather care guide from our supplier – www.wollsdorf.com

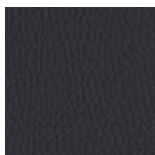
Paloma Soft is not available for HÅG Tion model 2160 and HÅG Conventio Wing.



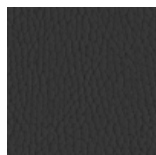
ATG55115



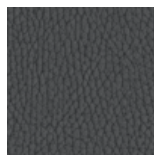
ATG55130



ATG55185



ATG56100



ATG55206

ELMOsoft (ELMO) - PRICE GROUP 7

Elmosoft is a chrome free supreme quality semi-aniline grain leather from Scandinavian cattle. It is soft and pliable with an outstanding comfort and durability. Visible insect-bites and scars from healed wounds add to the authentic quality and character of the leather.

- Thickness:** 1.1 - 1.3 mm
- Flammability:** BS EN 1021: 1-2 (Cigarette & match), BS 5852 Crib 5, CA TB 117-2013, DIN 4102 -1 (B1), IMO 2010 FTP Code Part 8 (IMO652), UNI 9175, Önorm B 3825, UNI 9175
- Light fastness:** 6 (EN ISO 105-B02)
- Rubbing:** Wet 80/4 - Dry 2000/4 - Sweat 50/4 - ISO 11640
- Finish-adhesion:** ≥ 2 N/cm - ISO 11644
- Tear-strength:** ≥ 20 N/cm DIN 53329-A
- Environmental facts:** Free of heavy metals, tanned without using chromium salts, ISO 14001 certified company, Clean water tanning technology with biological Water Treatment Plant and 100% CO2 neutral on energy.
- Animal Welfare:** All hides are by-products from the meat and dairy industries with traceability back to the farm. Following strict regulations on animal welfare in compliance with national and international standards as those issued by the World Organization for Animal Health (6 animal welfare freedoms)
- Produced in:** Sweden
- Cleaning:** (Follow the guidelines by our supplier – www.elmoleather.com)

Elmosoft is not available for HÅG Conventio Wing.

